

MCS7840/MCS7820/MCS7810
Mac OS X Driver Installation Guide

Revision 1.00
June 2nd, 2015

Revision History

Revision	Date	Description
1.00	2015/06/02	Initial release.

Table of Contents

1. Introduction	4
2. Driver Installation Procedures.....	4
3. Driver Uninstallation Procedures.....	8
4. Troubleshooting.....	9
4-1. How to identify the Vendor ID and Product ID of your USB dongle?	9
4-2. How to identify the installed Mac OS X driver revision?	10
4-3. How to test MCS7840/MCS7820/MCS7810 Serial Port on Mac OS X?	11

1. Introduction

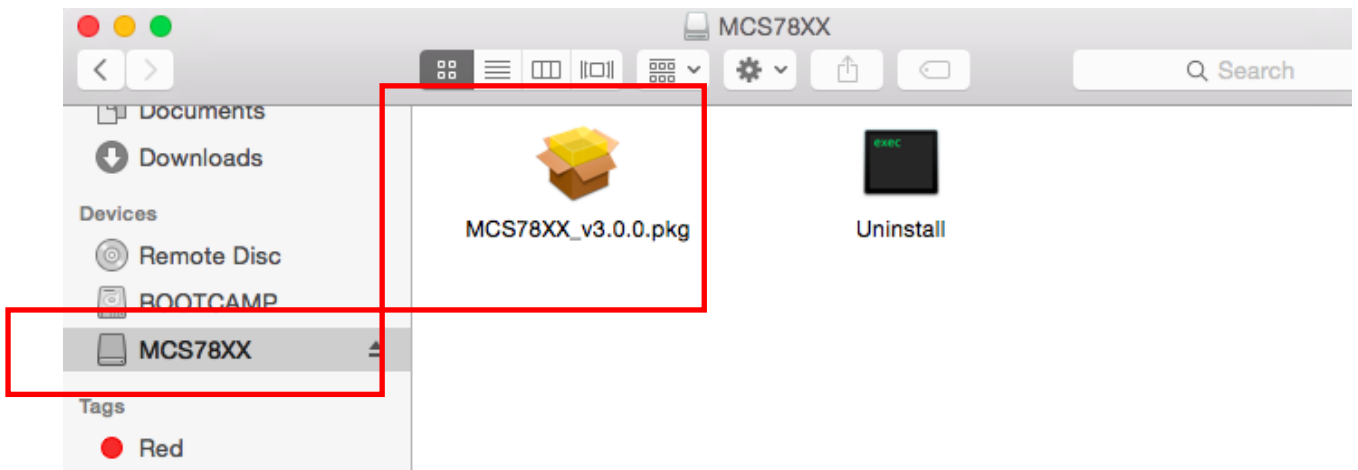
This document contains the installation and uninstallation information of MCS7840/MCS7820/MCS7810 Mac OS X 10.5 to 10.10 driver.

2. Driver Installation Procedures

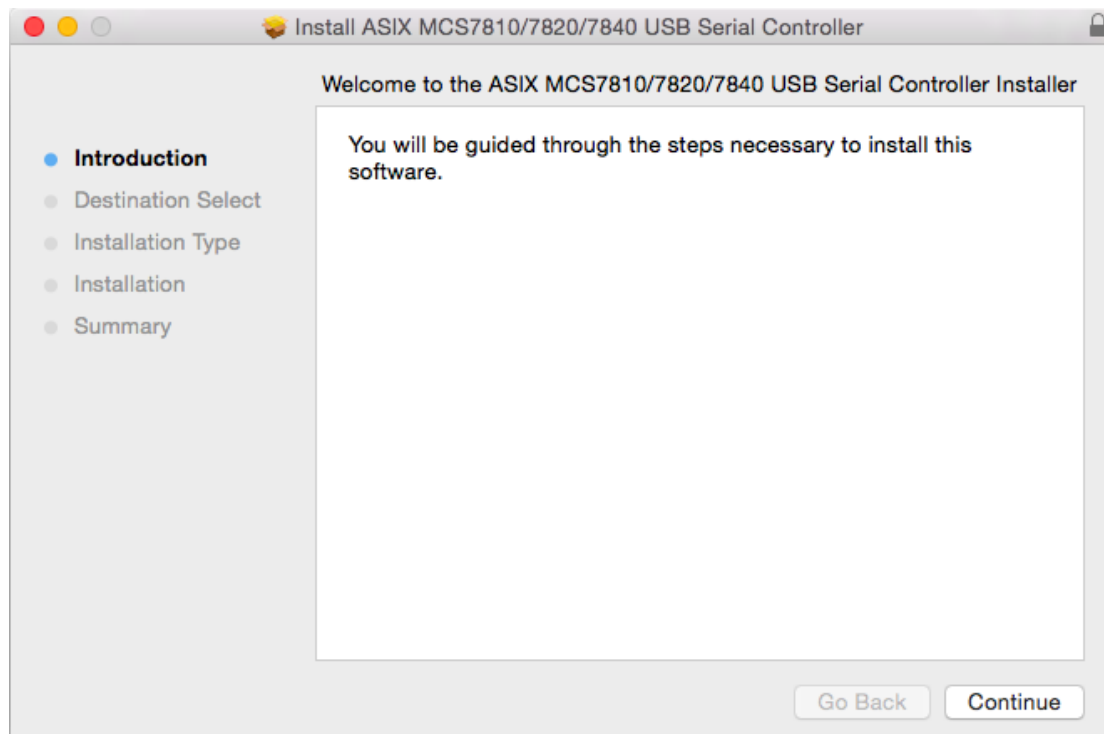
The MCS78x0 Mac OSX driver installation package is “**MCS78XX_MacOS_vx.x.x.dmg**” (“x.x.x” is driver revision number).

The following is an example of ASIX’s MCS78x0 Mac OSX driver installation procedures.

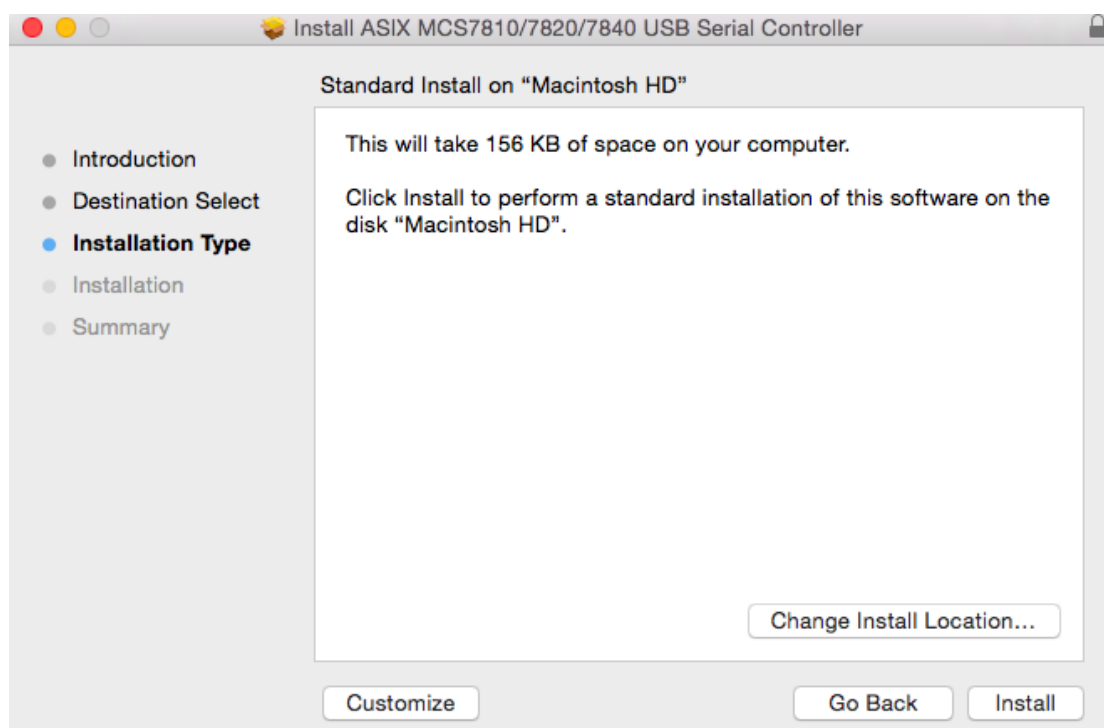
Step 1: Click the “**MCS78XX_MacOS_vx.x.x.dmg**”, the following “MCS78XX” virtual disk will be appeared on the Desktop of your Mac OSX system. (This “MCS78XX” virtual disk will be auto-removed after rebooting Mac OSX system.)



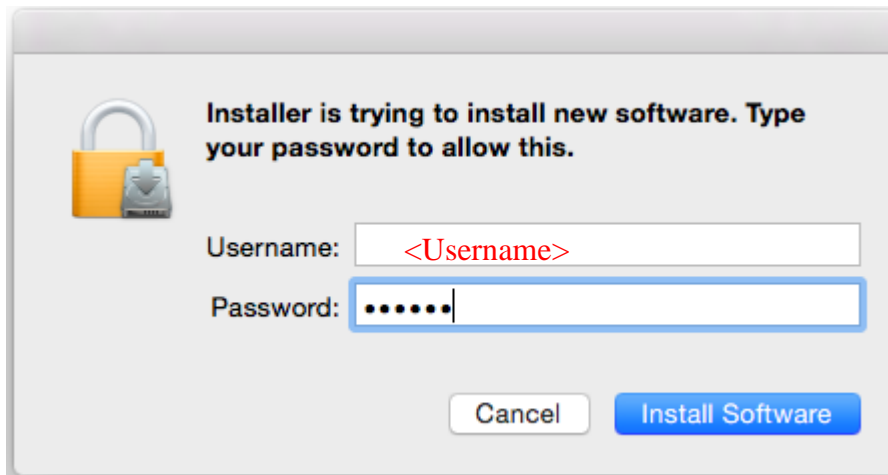
Step 2: Click the “**MCS78XX_vx.x.x.pkg**”, the following driver setup dialog will appear. Click the [Continue] button to start the installation operation and follow the instructions to continue the installation.



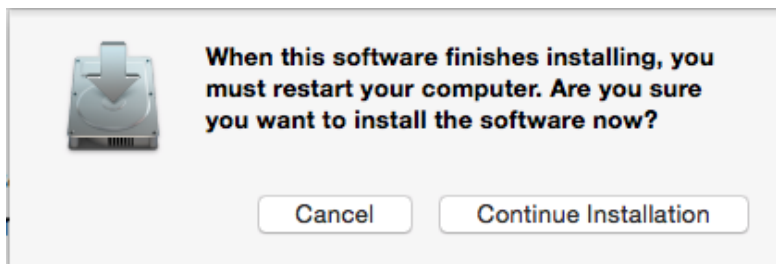
Step 3: Click the [Install] button to continue the installation operation. You might need to enter your user/password during the driver installation.



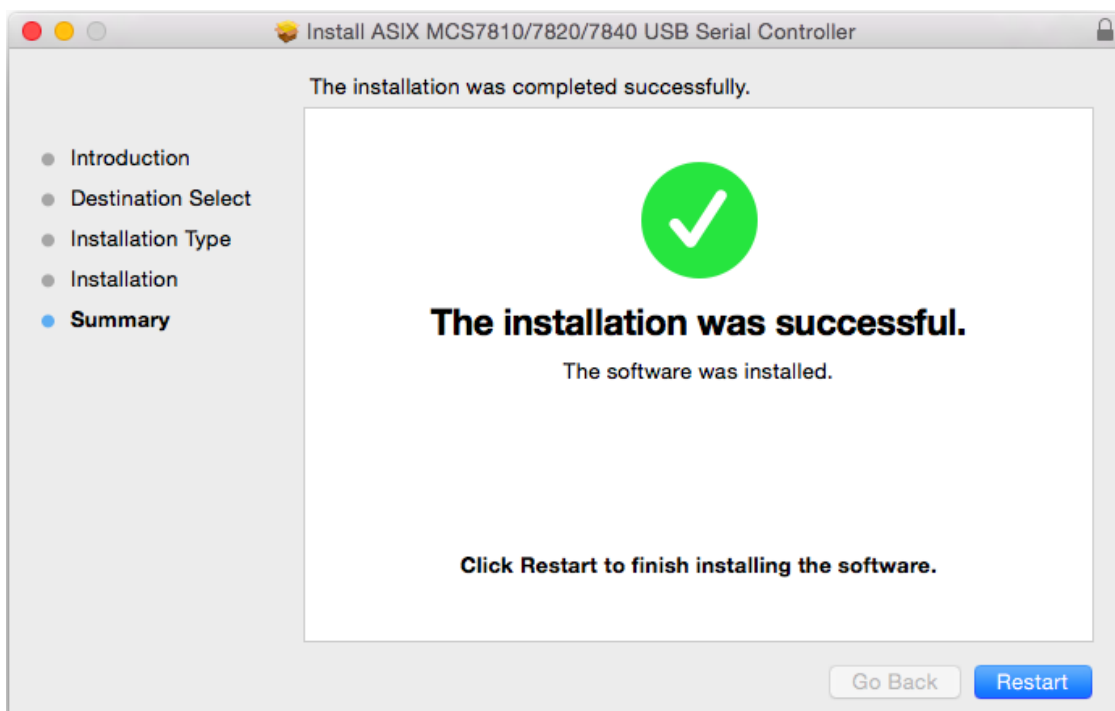
Step 4: You might need to enter your user/password during the driver installation.



Step 5: Click the [Continue Installation] button to continue the installation operation.

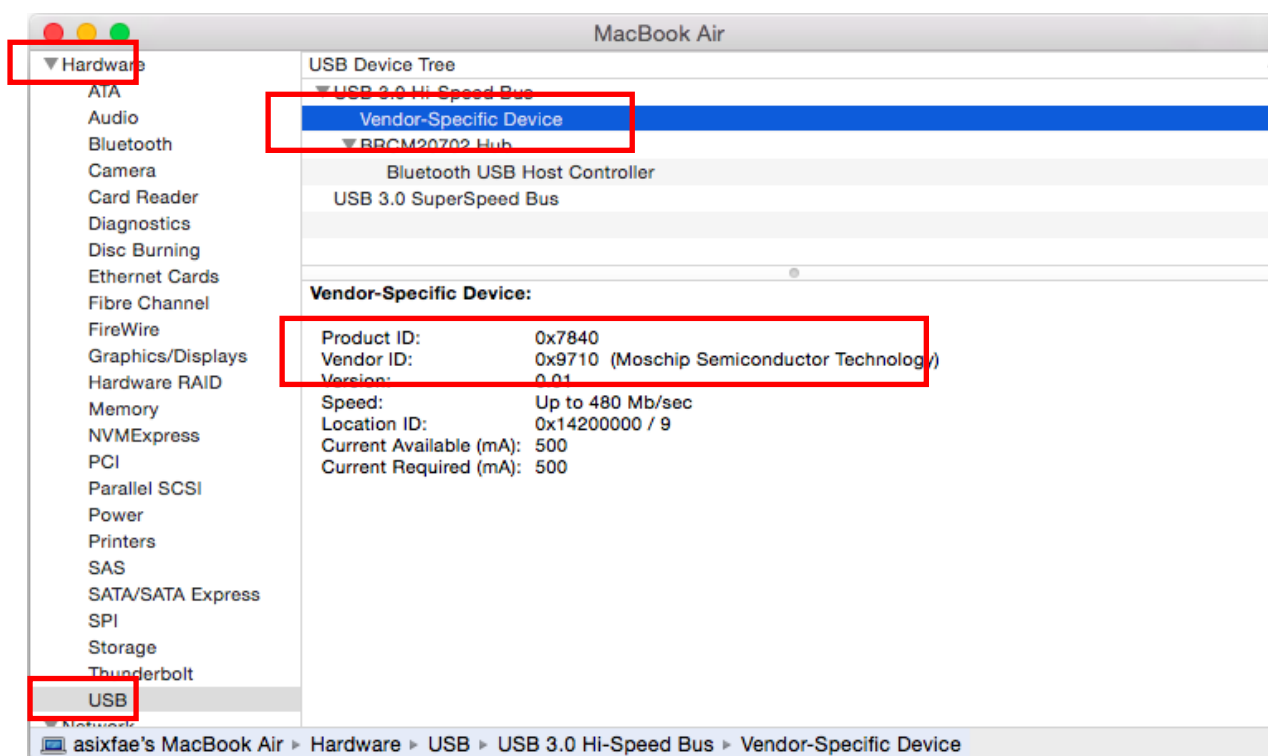


Step 6: Click the [Restart] button to restart Mac OSX system to take effect the revised driver installation.



Step 7: After booting up your Mac OSX system, plug your MCS7840/MCS7820/MCS7810 USB dongle onto the USB port of your Mac OSX system and refer to the following information to double check if your USB dongle had been identified properly by Mac OSX system and the MCS78x0 Mac OSX driver was installed correctly or not.

(1) You can check the Vendor/Product ID information of your USB dongle from here.



(2) You can check the installed MCS78x0 Mac OSX driver version information by running the “**kextstat**” command.

Tsengteki-MacBook-Air:~ asixfae\$ **kextstat**

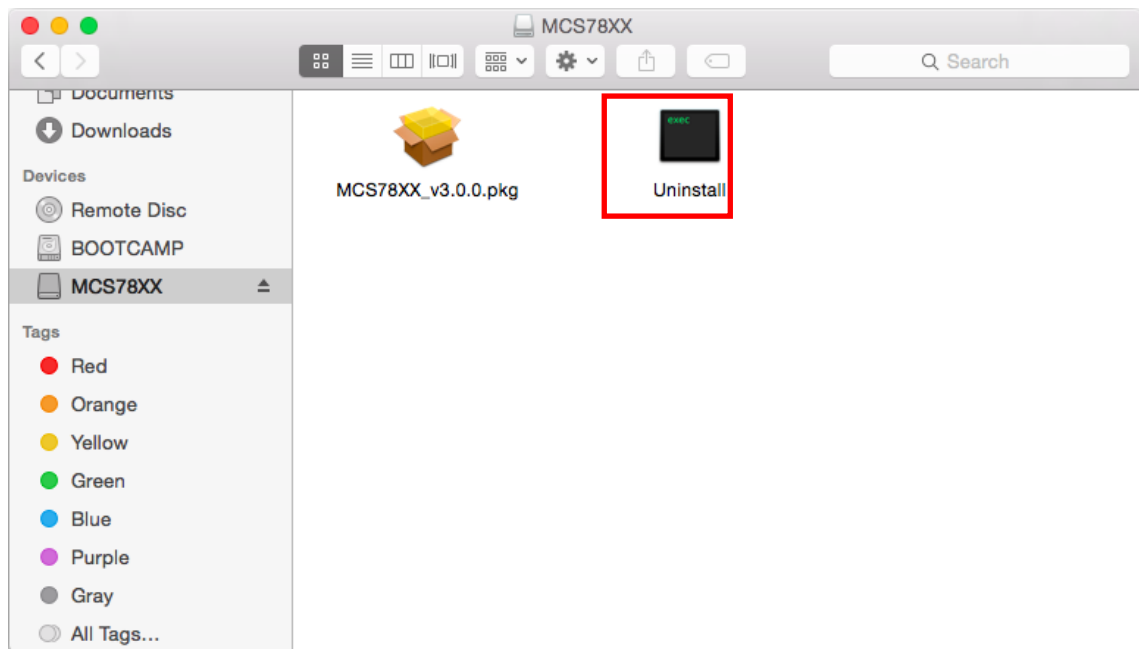
```
Index Refs Address      Size   Wired   Name (Version) <Linked Against>
.....
133  0 0xffffffff7f829e2000 0x11000 0x11000  com.asix.driver.MCS7840 (1.2.0) <85 40 5 4 3>
.....
```

3. Driver Uninstallation Procedures

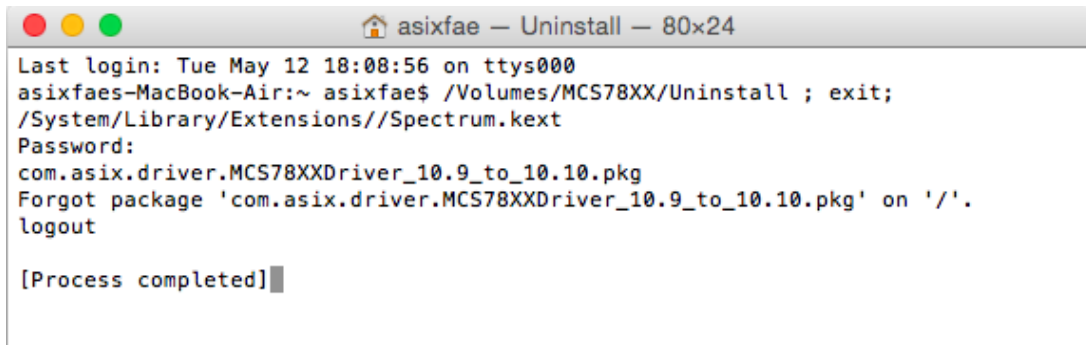
The MCS78x0 Mac OSX driver uninstallation utility is “**Uninstall**”.

The following is an example of MCS78x0 Mac OSX driver uninstallation procedures.

- Step 1: Click the “**MCS78XX_MacOS_vx.x.x.dmg**” (“x.x.x” is driver revision number), the following “MCS78XX” virtual disk will be appeared on the Desktop of your Mac OSX system. (This “MCS78XX” virtual disk will be auto-removed after rebooting Mac OSX system.)



- Step 2: Click the “**Uninstall**” utility to uninstall MCS78x0 Mac OSX driver.
(You might need to enter your user password to finish the driver uninstallation operation)

A screenshot of a terminal window titled 'asixfae - Uninstall - 80x24'. The terminal shows the following text:

```
Last login: Tue May 12 18:08:56 on ttys000
asixfae-MacBook-Air:~ asixfae$ /Volumes/MCS78XX/Uninstall ; exit;
/System/Library/Extensions//Spectrum.kext
Password:
com.asix.driver.MCS78XXDriver_10.9_to_10.10.pkg
Forgot package 'com.asix.driver.MCS78XXDriver_10.9_to_10.10.pkg' on '/'.
logout

[Process completed]
```


4. Troubleshooting

(The figures in this section are examples for your reference)

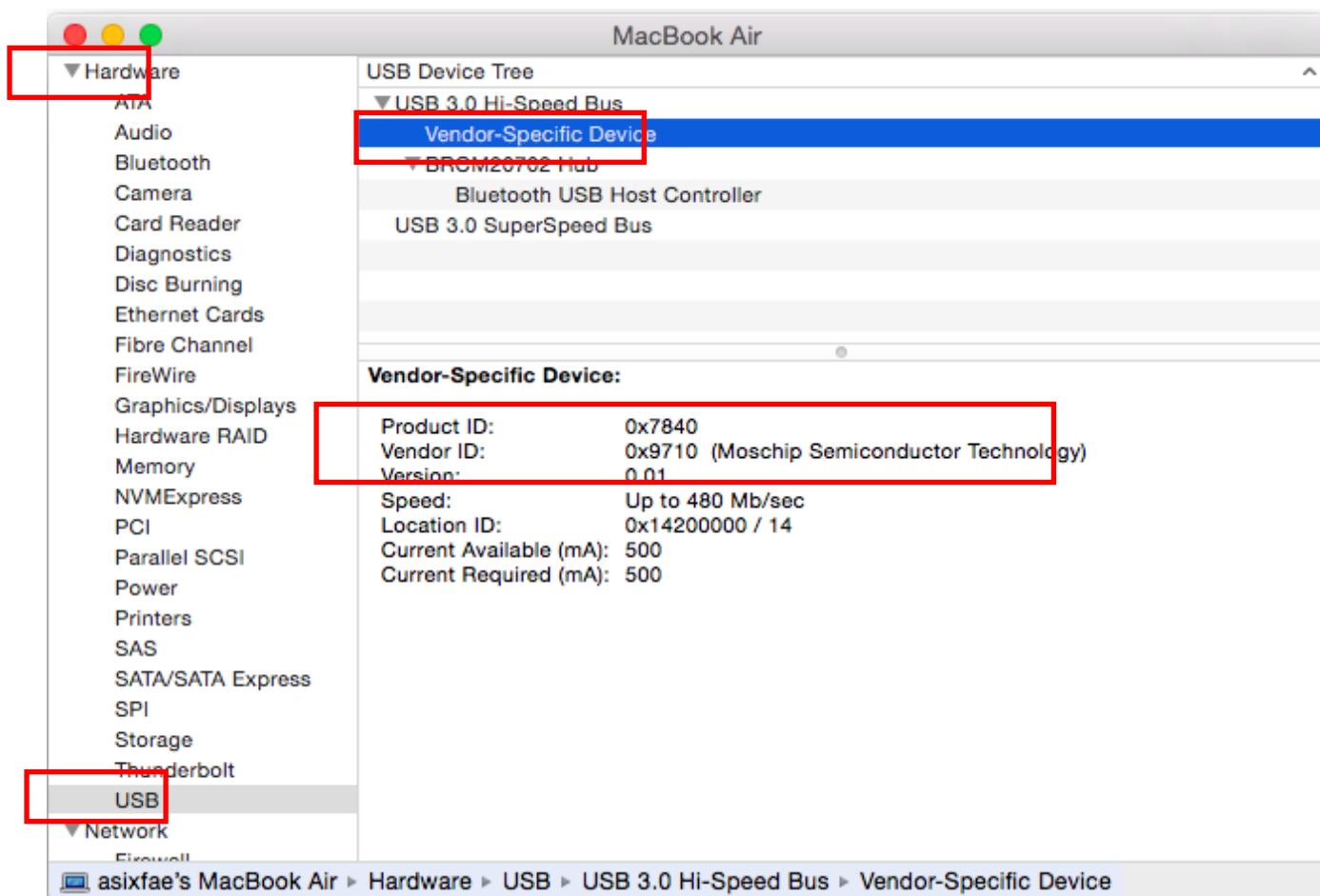
Please refer to below sections to provide us the required information for further investigation if you have any problems on MCS78x0 Mac OS X driver installation.

4-1. How to identify the Vendor ID and Product ID of your USB dongle?

Please refer to below picture to make sure if the Vendor ID and Product ID of your USB dongle are ASIX's default values or not? If no, please contact the manufacturer of your USB dongle to get a proper driver directly.

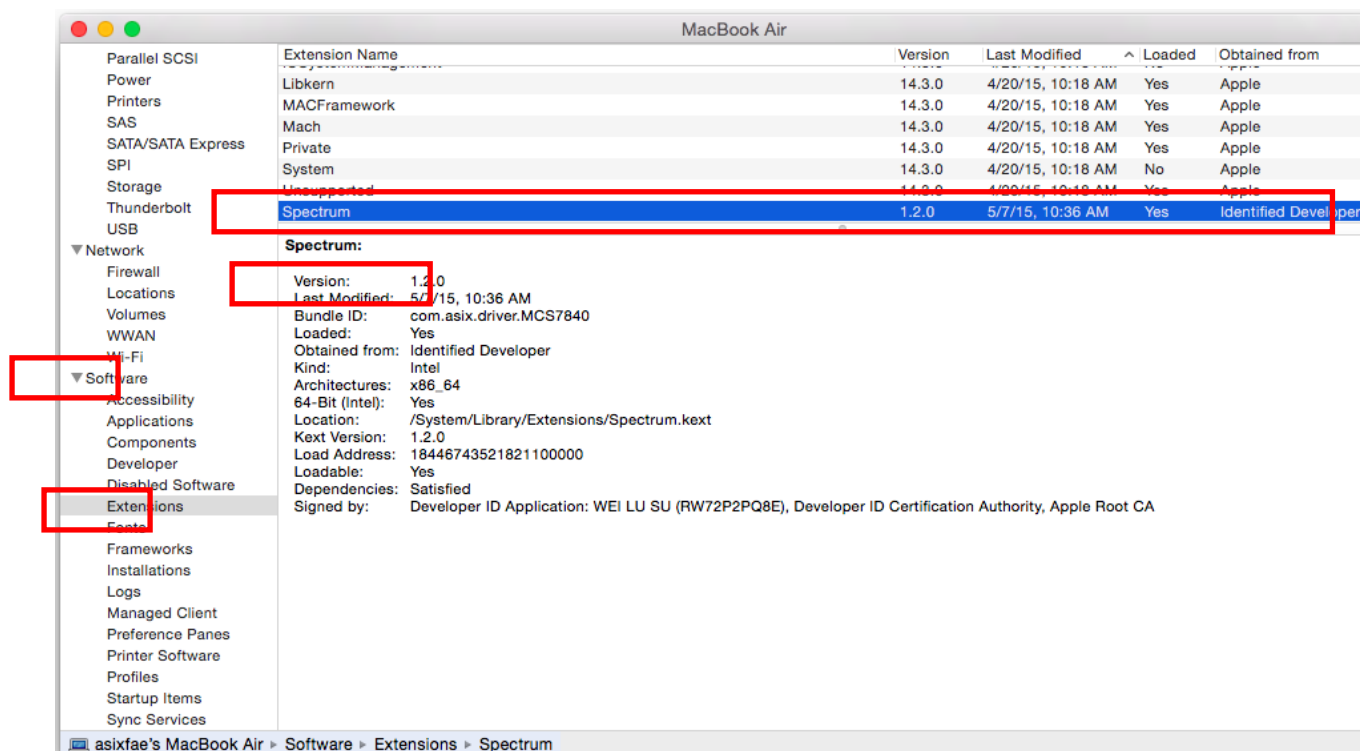
The following are the MCS7840/MCS7820/MCS7810 default VID/PID.

ASIX Product	ASIX Vendor ID	Product ID
MCS7840	9710h	7840h
MCS7820	9710h	7820h
MCS7810	9710h	7840h



4-2. How to identify the installed Mac OS X driver revision?

Please refer to below picture to identify the driver revision of the installed MCS78x0 Mac OS X driver.



Or run the “**kextstat**” or “**sudo dmesg**” commands in the Terminal console to identify the driver revision of the installed MCS78x0 Mac OS X driver.

Tsengteki-MacBook-Air:~ asixfae\$ **kextstat**

Index Refs Address Size Wired Name (Version) <Linked Against>

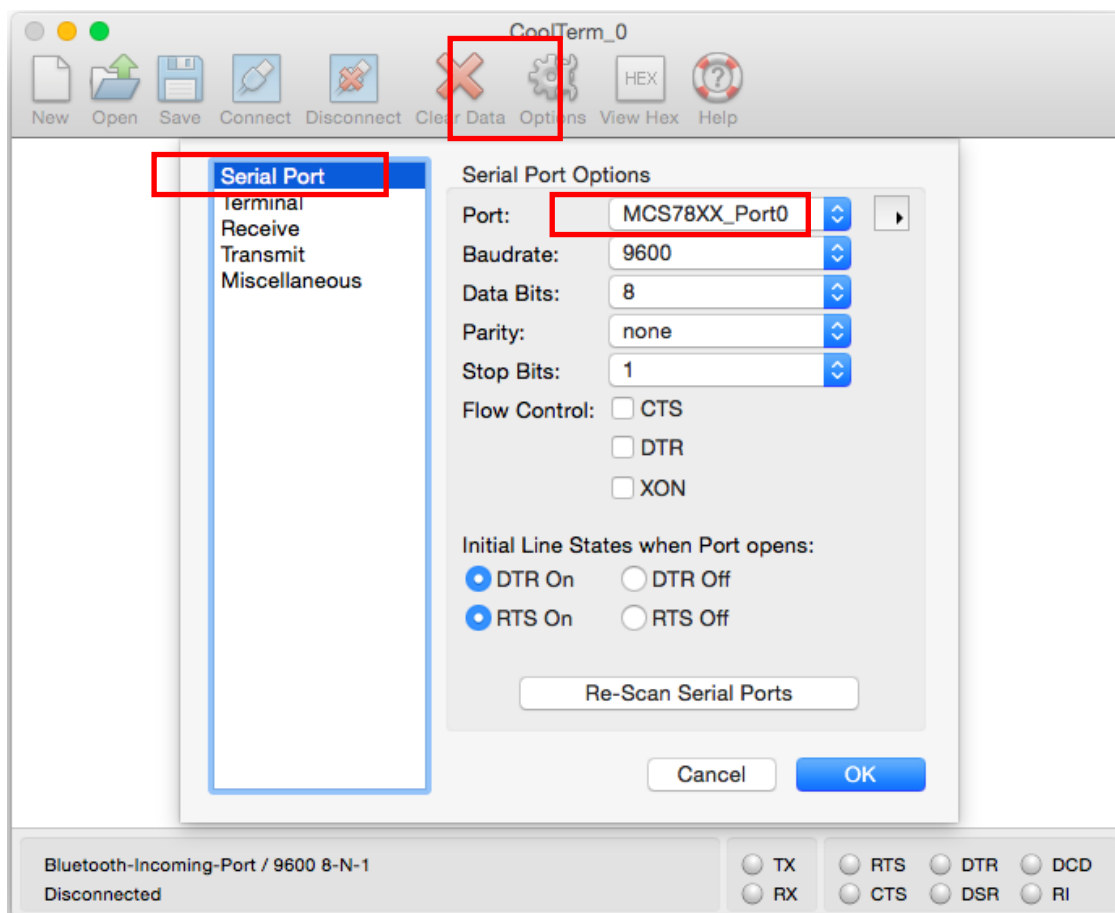
....

133 0 0xfffff7f829e2000 0x11000 0x11000 com.asix.driver.MCS7840 (1.2.0) <85 40 5 4 3>

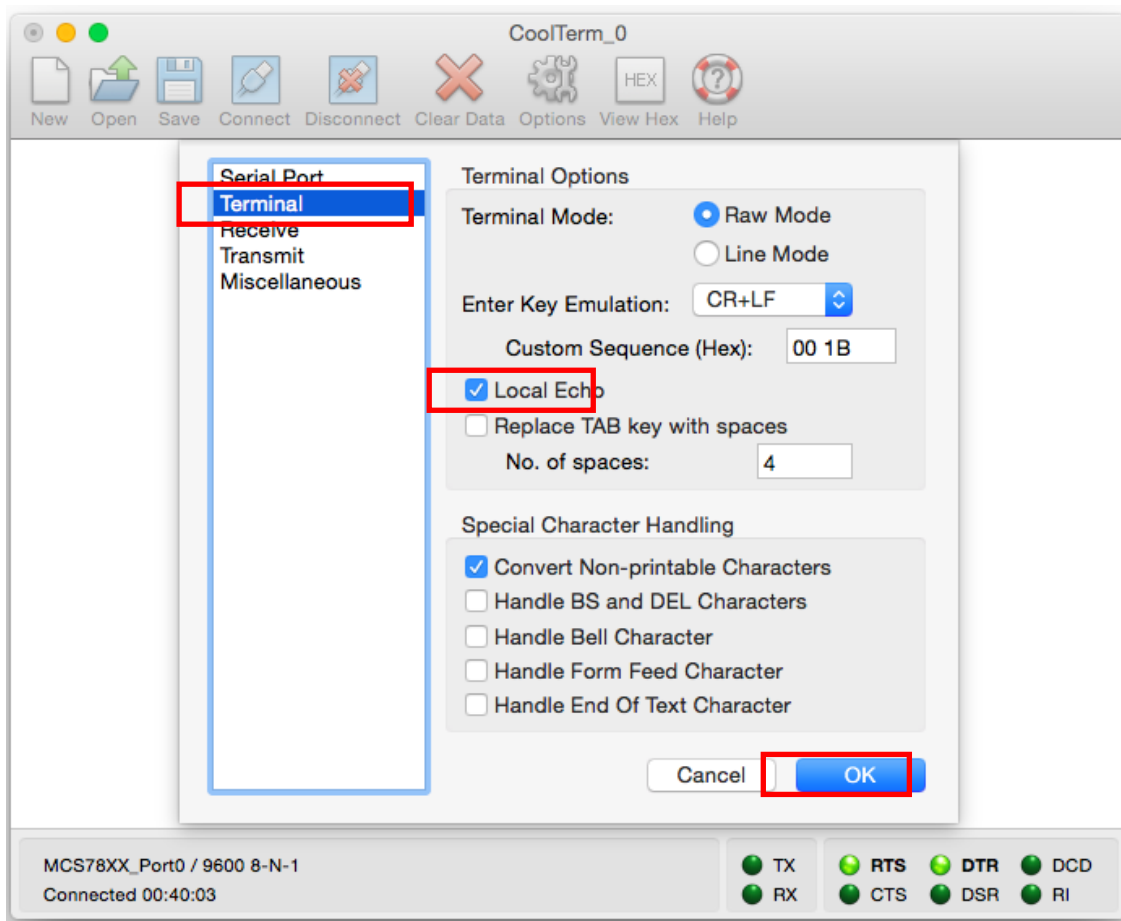
4-3. How to test MCS7840/MCS7820/MCS7810 Serial Port on Mac OS X?

Step 1: To test a Serial Port in Mac OS X, you need to download and install the free CoolTerm application from Internet (<http://freeware.the-meiers.org/>) firstly.

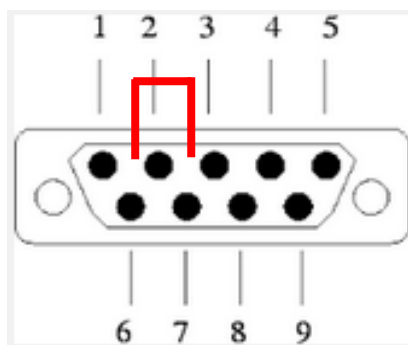
Step 2: Open CoolTerm and click options, in the drop down Brainboxes Serial ports appear with the name "MCS78XX_Portx" ("x" is Serial Port number), select the serial port to test with default settings.

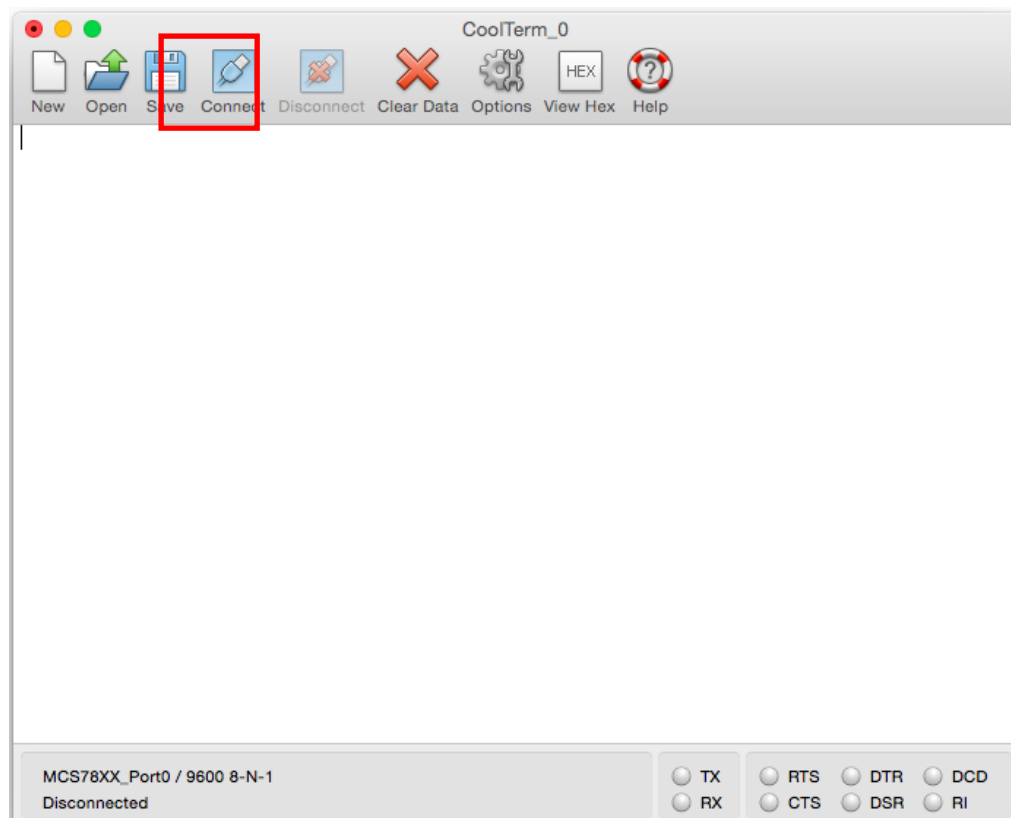


Step 3: Click on the Terminal tab on the left and turn on "Local Echo".

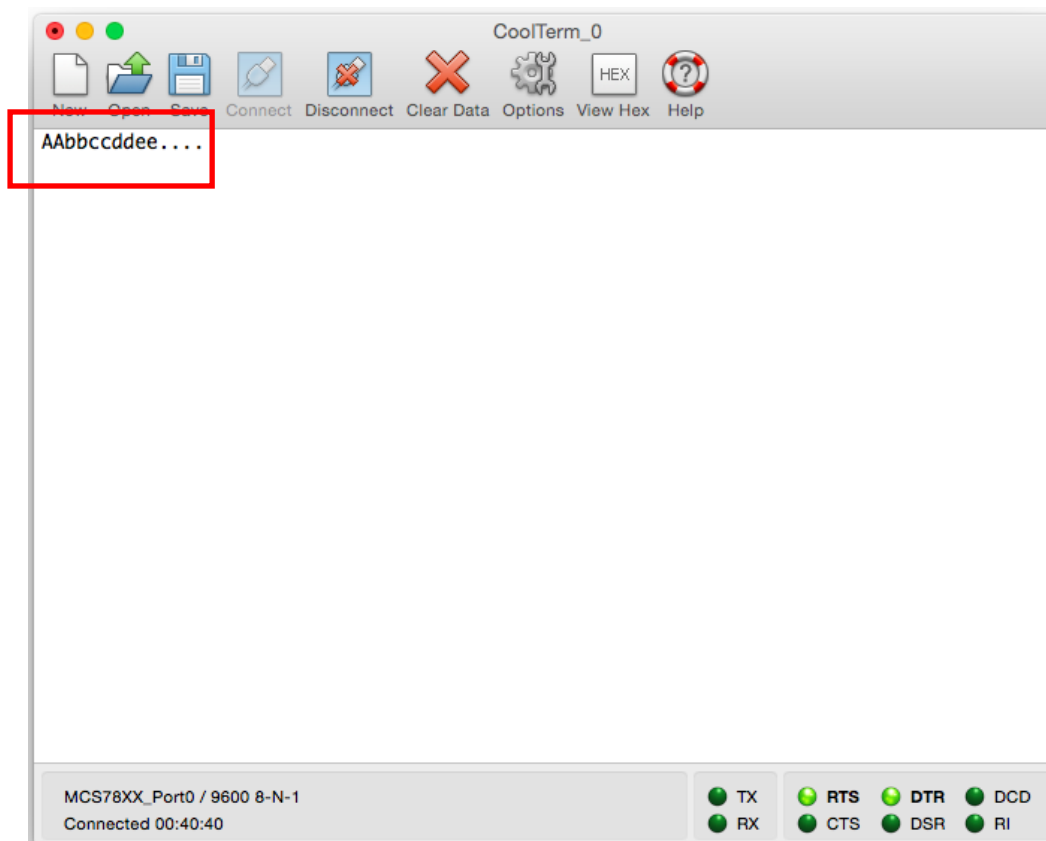


Step 4: Press "Connect" on CoolTerm, and Put a loop-back on the Connector of the MCS7840/MCS7820/MCS7810 device under test, for an RS232 serial port this can be performed by shorting pins RX and TX.





Step 5: Type into the CoolTerm console, the characters should appear on the screen.





**4F, No.8, Hsin Ann Rd., Hsinchu Science Park,
Hsinchu, Taiwan, R.O.C.**

TEL: +886-3-5799500

FAX: +886-3-5799558

Email: support@asix.com.tw

Web: <http://www.asix.com.tw>