

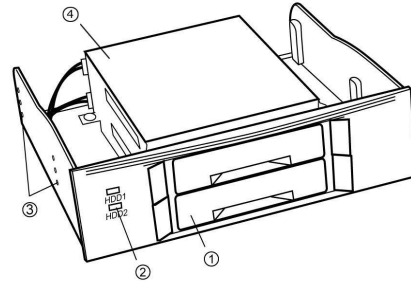
## 5.25" Mobile Rack for 2 x 2.5" SATA Drive

### Package Contents

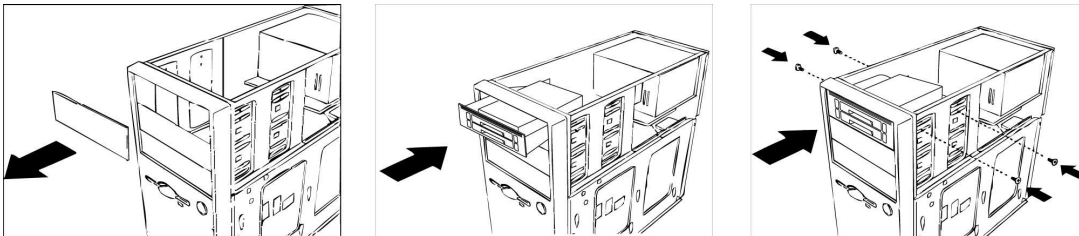
- 5.25" Mobile Rack
- 2x SATA Data Cable
- 2x SATA Power Cable
- Screws
- Quick Install Guide

### Product Overview

1. HDD Tray
2. HDD 1 / HDD 2 LED
3. Hole for screw
4. Metal casing for heat-dissipation

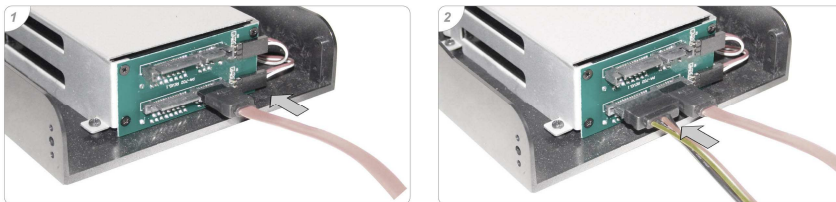


### Installing the HDD mobile rack into a 5.25" drive bay



### Cable connection

1. Connect SATA data cable to your mobile rack and the other end of cable to your Motherboard
2. Connect SATA power cable to the mobile rack and the other end of cable to an available Molex/5.25" power connector



### SATA HDD Installation

*Note : The HDD tray supports 2.5" SATA drives up to 15mm in height.*

1. Position the SATA drive correctly into the removable tray of the mobile rack, inserting one side of the SATA drive.
2. Fix the SATA drive in the tray by joining the screw hole of the drive to the 4 assembly points of the tray.
3. If you later need to take the drive out, please start by detaching 1 assembly point from the drive, then take apart a second assembly point.
4. After a third assembly point has been detached the drive may be removed from the tray.
5. The tray can simply be pushed into the rack until it clicks into position. Press inwards both ends of the HDD tray in order to pull it out of the mobile rack.

